



# roofingclips

BY CLAERHOUT ALUMINIUM

roofing clips roof edge system in aluminium  
(available in 70 mm and 100 mm height with the same base profile)

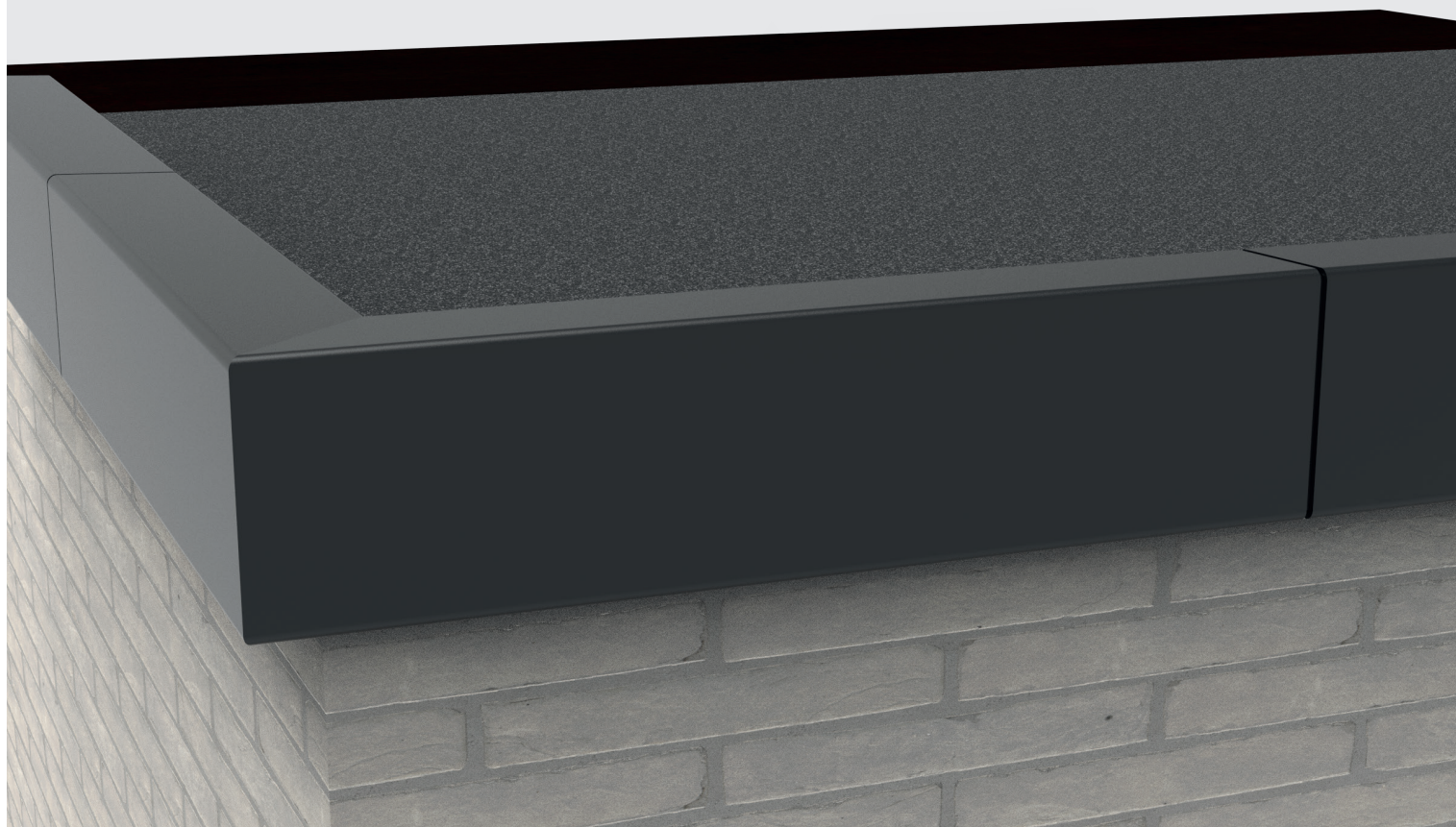
.....

Saves time thanks to pre-punched, oval holes

Simple processing and finishing operation

Fast waterproof finish on joints

Suitable for roof coverings of 4 mm - 5 mm



# roofingclips

roofing clips roof edge system in aluminium  
(available in 70 mm and 100 mm height using the same base profile)

**The Roofingclips roof edge system consists of only two parts: the base profile and the moulding. The base profile provides the roof edge with a watertight finish. The moulding can then be clipped to the base profile in the required colour.**

## A TIME-SAVING AND COST-EFFECTIVE SOLUTION

The base profile comes with pre-punched 6 x 16 mm oval holes and a facade stop. In addition, the membrane's direct connection to the roof edge means huge savings in membrane accessories.

## SIMPLE PROCESSING AND FINISHING OPERATION

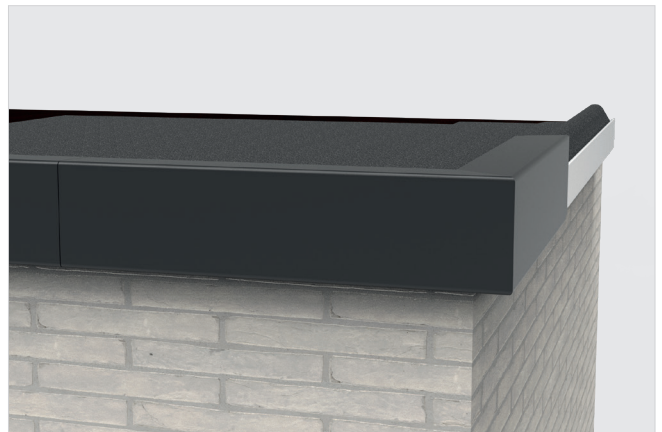
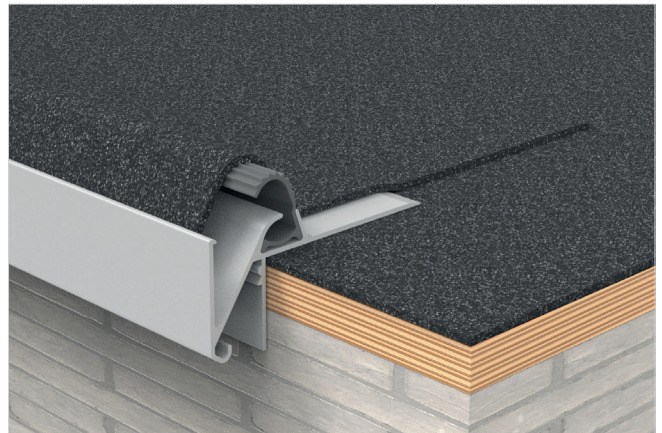
Practical accessories are provided to create the inside and outside corners. The 'easy corner' accessory slides into the base profile at the corners for a seamless connection. This means that no sawing is required in the corners; a mitre saw is not needed. After the roof edge with the base profile is made waterproof, the moulding is clipped onto the base profile. The stove-enamelled aluminium moulding is fitted with rot-resistant thermoplastic rubber to ensure an optimum clamping of the roof covering.

## NO RISK OF LEAKAGE, NO BREAKAGE OR DAMAGE TO THE SURFACE OR WALL

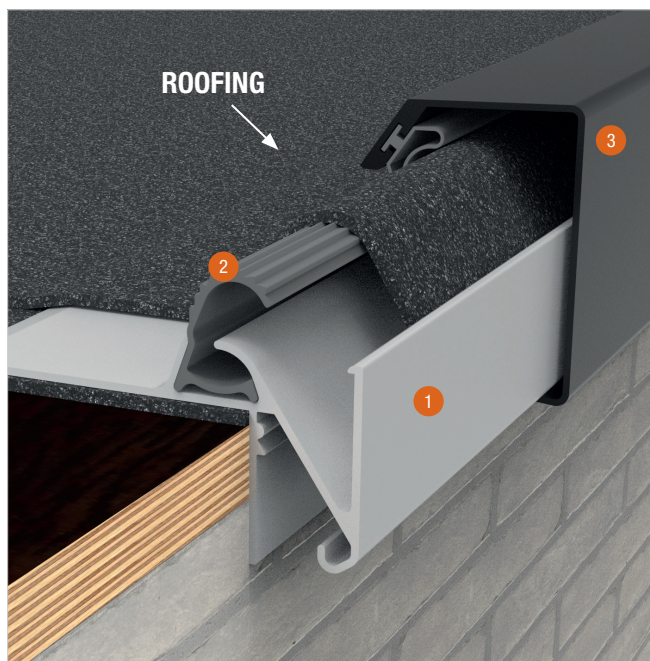
The base profile and the roof edge connect directly to each other. This reduces the risk of leakage, fractures or damage to the foundation or wall. The 50 mm long joint clips provide a watertight finish to the joints.

## SUITABLE FOR ROOF COVERINGS OF 4 MM - 5 MM

The Roofingclips roof edge system is suitable for roofing thicknesses of 4 to 5 mm. Suitable for overlaps with a maximum 2-layer thickness.







## COMPONENTS

### BASE PROFILE 1 + ABS SPRING 2

Length: 3 m

Available in all RAL colours

### MOULDING 3

Length: 3 m

Available in all RAL colours

### CORNERS / END PIECE

Outside corner 30 x 30 cm (90°) 4

Inside corner 30 x 30 cm (90°)

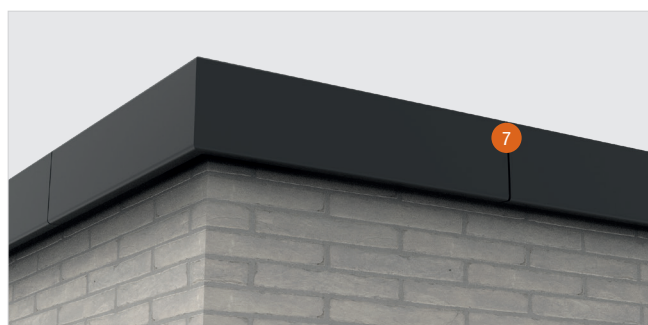
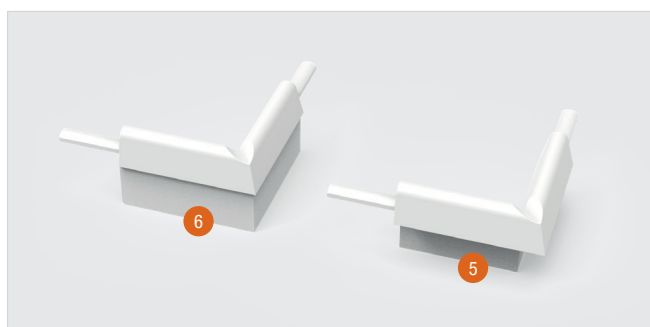
Easy Corner inside corner 5

Easy Corner outside corner 6

End piece left / right

### JOINT CLIPS

Inside joint clip 5cm 7





## FITTING

1. Attach the base profile every 300 mm using the pre-punched oval fixing holes. Always leave an expansion gap of 3 mm between the base profiles.
2. Use the protective edge to align the base profile with the existing cavity seal.
3. Form the corners by sliding the Easy Corner accessories into the two base profiles.
4. Position the roof covering on the base profile without burning into the base profile. Heat the roof covering (do not melt it!), so it can be properly moulded onto the base profile. Neatly melt the overlapping section next to the base profile onto the bottom layer of the roof covering to seal it. Suitable for overlaps with a maximum 2-layer thickness.
5. Clip the moulding from top to bottom to secure the roof covering. It is best to clip the roofing when it is warm. Again, keep an expansion joint of 3 mm. Position the corners at the ends and clip the corner piece from top to bottom.
6. The inside joint clips are positioned underneath the joints. Clip the first moulding, slide a connecting piece halfway into the joint, and clip the next moulding over the connecting piece.

## KEY POINTS

- Always leave an expansion gap of 3 mm between the base profiles.
- A 3 mm expansion joint should also be left between the mouldings.
- Suitable for overlaps with a maximum 2-layer thickness.
- Do not use pieces smaller than 1 m for the mouldings.
- If a moulding needs to be shortened, always shorten the rubber 3 cm more so that the connecting piece can be inserted. The rubber can easily be slid out to be cut before being slid back 3 cm deeper. (The rubber cannot be clamped between the connecting piece).