

beaded wall cover plates

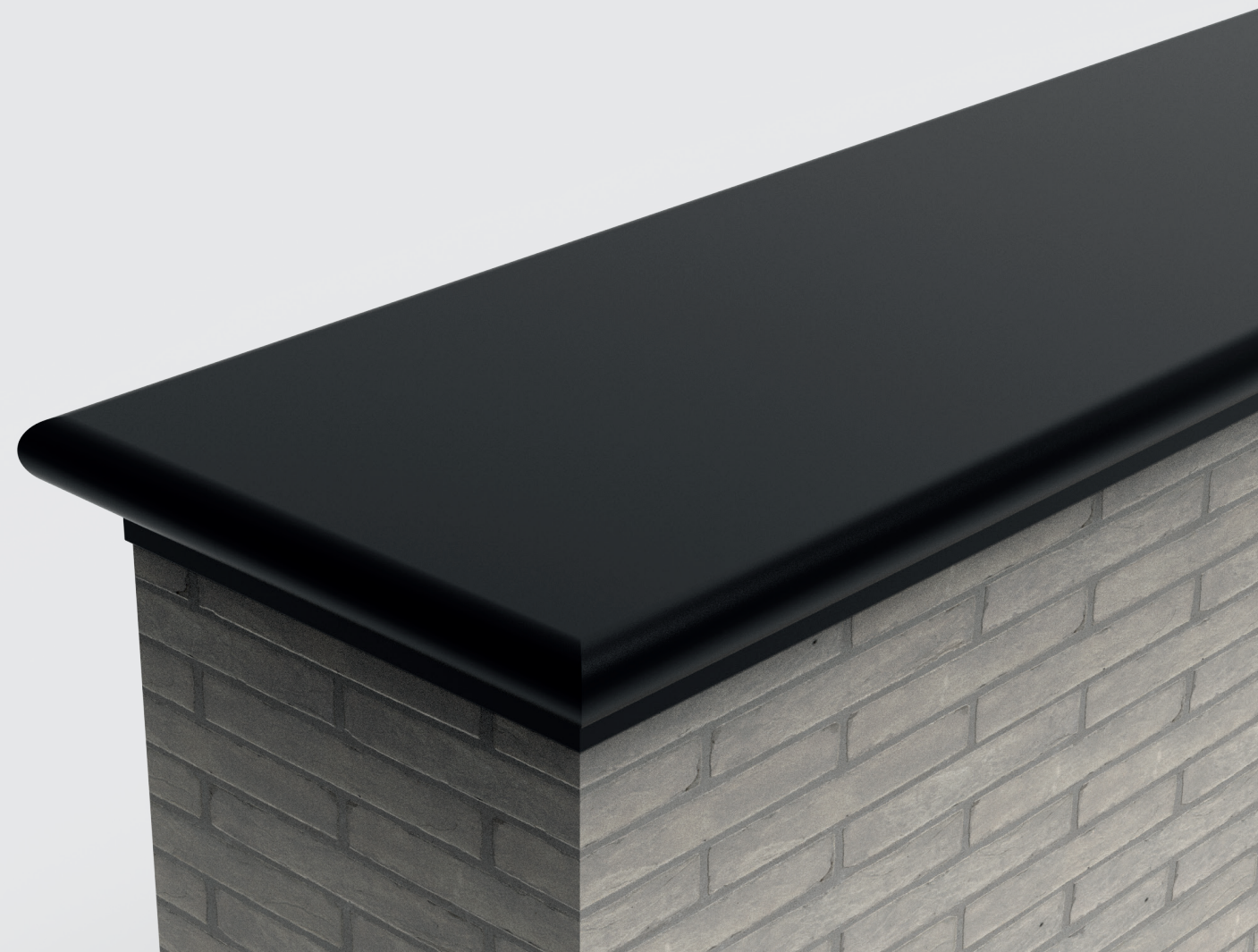
BY CLAERHOUT ALUMINIUM

beaded wall cover plates in aluminium
(width on request and 25 mm height)



© 2022.08.EN

TECHNICAL SHEET AVAILABLE AT WWW.CLAERHOUTALUMINIUM.COM



beaded wall cover plates

beaded wall cover plates in aluminium
(width on request and 25 mm height)

INSTALLATION

- 1 Install the concrete plywood or plywood on an incline to ensure good drainage.
- 2 Screw the base profile of the beaded wall cover plate at 30 cm intervals into the prepunched slotted holes (6x16 mm) (profile length 3000 mm).
- 3 Raise 1 base profile to create a slight drainage slope if necessary.
- 4 Take the bracket with EPDM rubber.
- 5 Screw the brackets (every meter) to the base profiles using stainless steel screws. Always position each bracket in the centre on the joints of the beaded wall cover plate.
- 6 Clip the beaded wall cover plate onto the brackets (max length 3000 mm).
- 7 Always slide the joint cover onto the beaded wall cover plate first so that it can be slid over the joints with silicone later (these cannot be clipped afterwards).

