

# clips&go<sup>®</sup> 2.0

BY CLAERHOUT ALUMINIUM

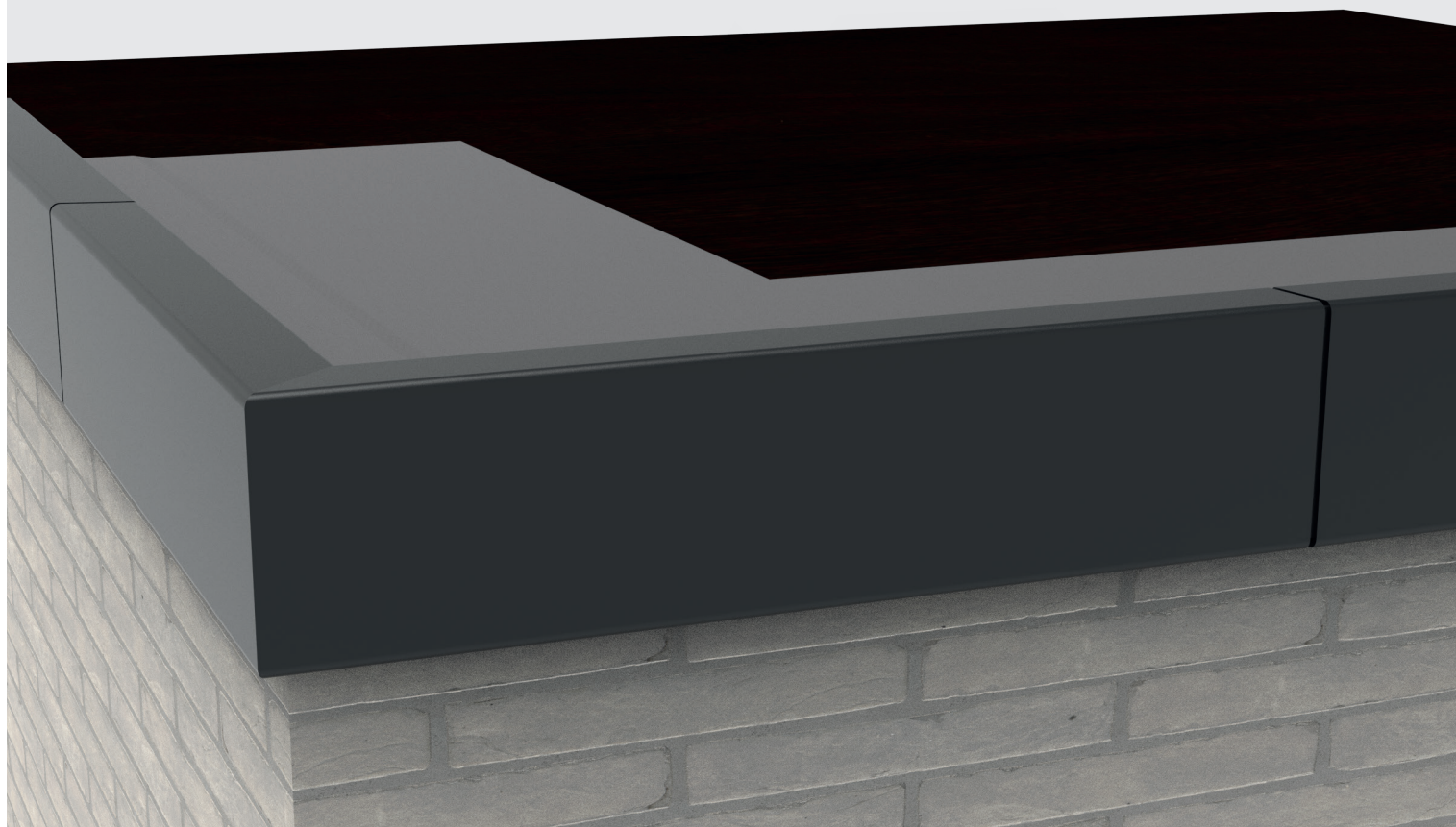
2-part aluminium roof edge system  
(available in 70 mm and 100 mm heights with the same base profile)

Time saving thanks to pre-punched oval holes

Easy to install and finish

Fast watertight joint finish

Suitable for EPDM membranes ranging from 1.2 mm - 2.5 mm



# clips&go® 2.0

## 2-part aluminium roof edge system

(available in 70 mm and 100 mm heights with the same base profile)

**The Clips&Go 2.0 roof edge system consists of only 2 parts: the base profile and the moulding. The base profile provides the roof edge with a watertight finish. The moulding can then be clipped to the base profile in the required colour.**

### A TIME-SAVING AND COST-EFFECTIVE SOLUTION

The base profile is provided with pre-punched, 6 x 16 mm oval holes and a front stop. In addition, the membrane's direct connection to the roof edge means huge savings in membrane accessories.

### SIMPLE PROCESSING AND FINISHING OPERATION

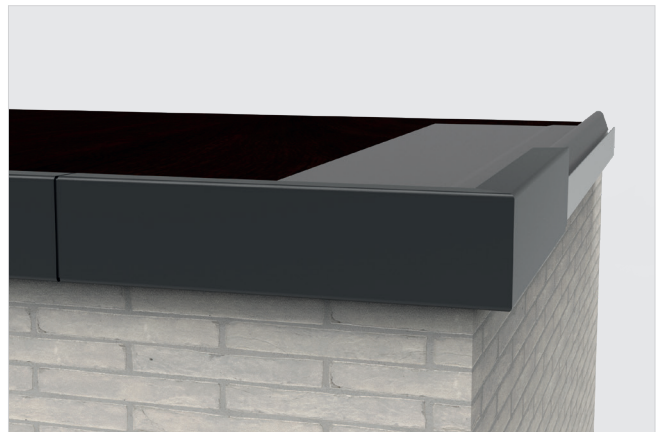
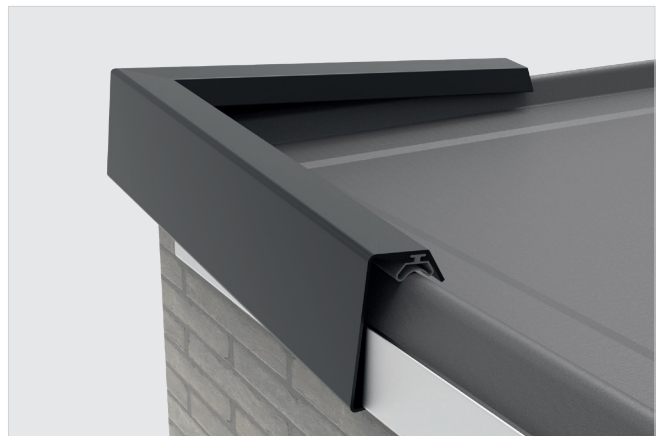
Practical accessories are provided to create the inside and outside corners. The 'easy corner' accessory is slid into the base profile at the corners for a seamless connection. This means that there is no need to saw into the corners, so you will not need a mitre saw. After the roof edge with the base profile is made watertight, the moulding is clipped onto the base profile. The stove-enamelled aluminium moulding is provided with rot-resistant thermoplastic rubber to ensure an optimum clamping of the roof covering.

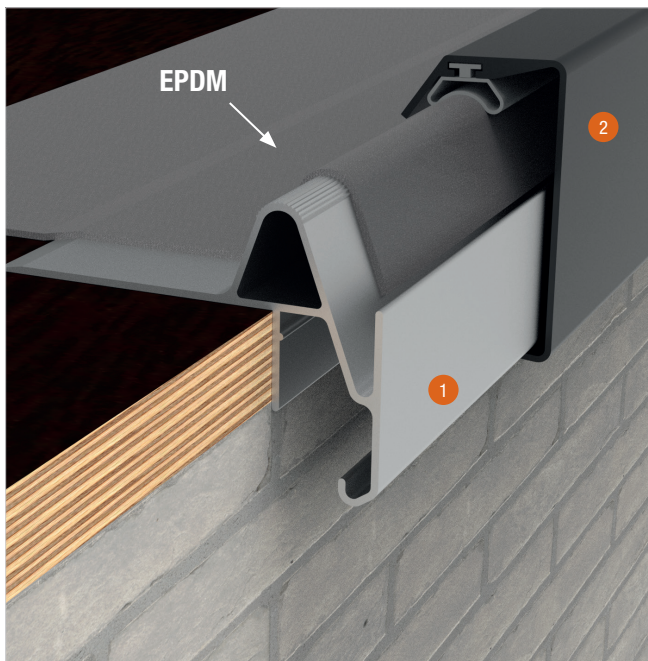
### NO RISK OF LEAKAGE, NO BREAKAGE OR DAMAGE TO THE SURFACE OR WALL

The base profile and the roof edge are directly connected to each other, thus reducing the risk of leakage, breakage or damage to the surface or wall. The 50 mm long joint clips provide a watertight finish to the joints.

### SUITABLE FOR EPDM ROOF COVERINGS MEASURING 1.2 MM - 2.5 MM

The patented Clips&Go 2-piece roof edge system is suitable for all EPDM membranes with a thickness of 1.2 mm to a maximum of 2.5 mm and for overlaps with a maximum 2-layer thickness.





## COMPONENTS

### BASE PROFILE 1

Length: 3 m  
Colour: brute

### 2D MOULDING 2

Length: 3 m  
Colours: available in all RAL colours

### CORNERS / END PIECES

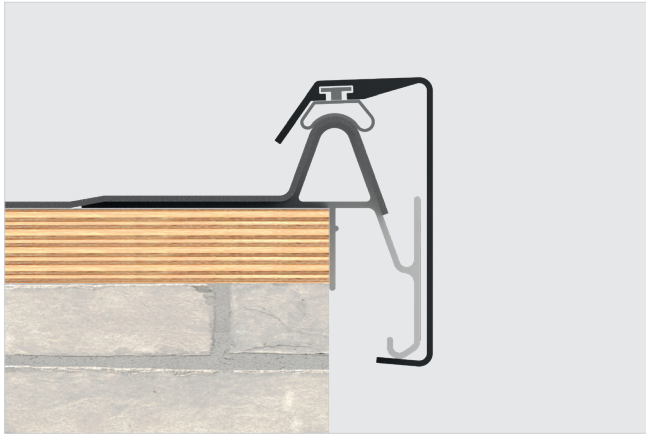
Outside corner 30 x 30 cm (90°) 3  
Inside corner 30 x 30 cm (90°)  
Easy Corner corner piece 4  
Left / right end pieces

### JOINT CLIPS

Temporary clip 10 cm 5  
Joint clip 5cm 6







## INSTALLATION

1. Attach the base profile every 300 mm using the pre-punched oval fixing holes.
2. Use the bumper to align the base profile with the existing cavity seal.
3. Form the corners by sliding the Easy Corner accessories into the base profiles.
4. Place the roof covering on the base profile.
5. Clip the moulding from top to bottom to secure the roof covering.
6. Use a joint clip at the location of each joint. Clip the first moulding and then slide a connecting piece halfway into the joint, then clip the next moulding over the connecting piece. Continue to clip this way.

## KEY POINTS

- Always leave a 5 mm expansion joint between the base profiles.
- A 3 mm expansion joint should also be provided between the mouldings.
- Max 2-layer thicknesses in case of overlaps.
- Do not use pieces smaller than 1 m for the mouldings.
- If a moulding needs to be shortened, always shorten the rubber 3 cm more so that the connecting piece can be inserted. The rubber can easily be slid out and shortened before reinserting 3 cm deeper (the rubber cannot be clamped between the connecting piece).

©2022.07.EN

**TECHNICAL DATA SHEET: [WWW.CLAERHOUTALUMINIUM.COM](http://WWW.CLAERHOUTALUMINIUM.COM)**